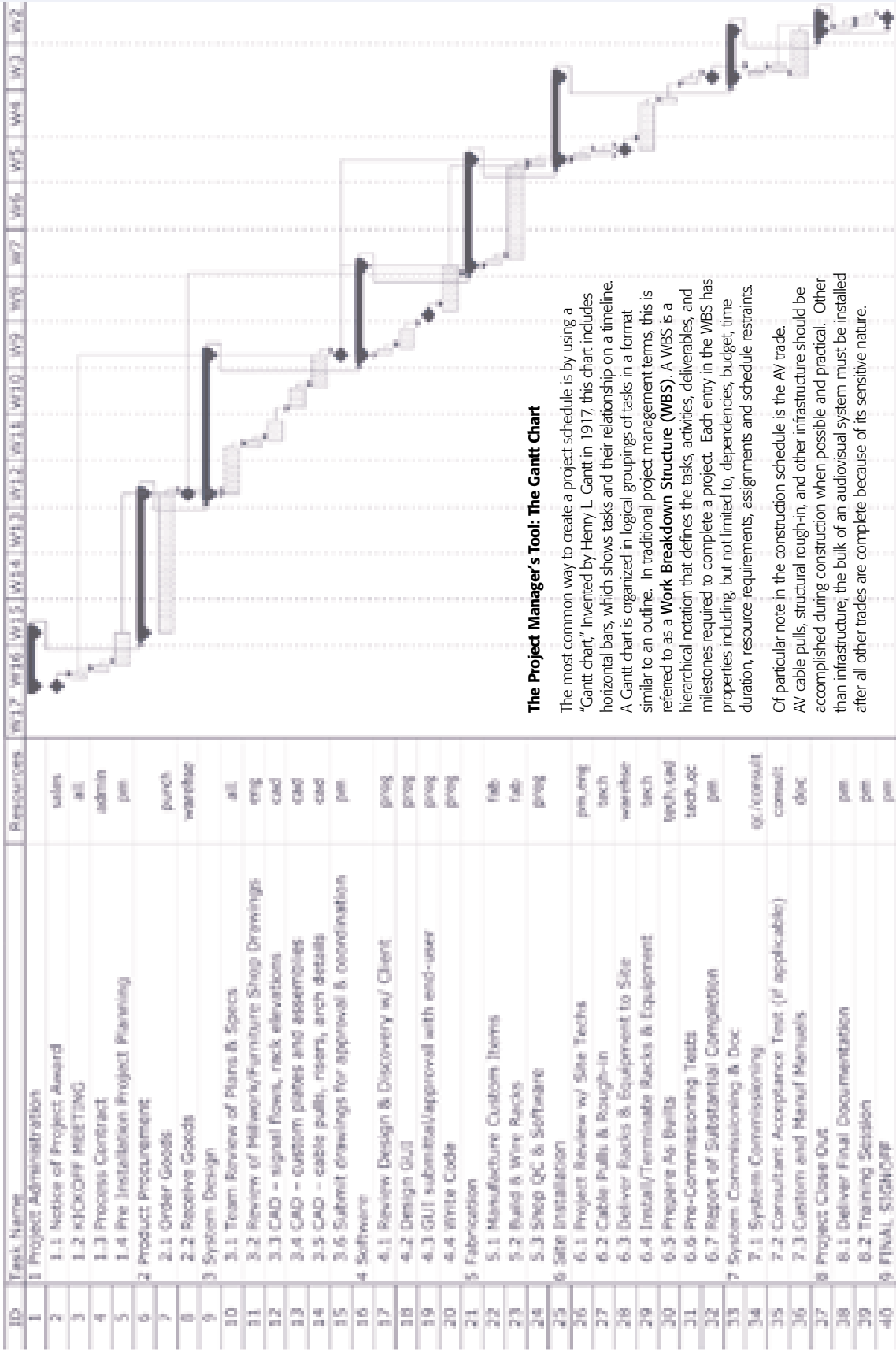


III. Construction Phase

SAMPLE AV SYSTEM PROJECT SCHEDULE

Sample Work Breakdown Structure (WBS) in Gantt Chart View



The Project Manager's Tool: The Gantt Chart

The most common way to create a project schedule is by using a "Gantt chart," invented by Henry L. Gantt in 1917; this chart includes horizontal bars, which show tasks and their relationship on a timeline. A Gantt chart is organized in logical groupings of tasks in a format similar to an outline. In traditional project management terms, this is referred to as a **Work Breakdown Structure (WBS)**. A WBS is a hierarchical notation that defines the tasks, activities, deliverables, and milestones required to complete a project. Each entry in the WBS has properties including, but not limited to, dependencies, budget, time duration, resource requirements, assignments and schedule restraints. Of particular note in the construction schedule is the AV trade. AV cable pulls, structural rough-in, and other infrastructure should be accomplished during construction when possible and practical. Other than infrastructure, the bulk of an audiovisual system must be installed after all other trades are complete because of its sensitive nature.